



FOLLICLE FILLER

PRODUCT KNOWLEDGE & APPLICATION

What is Follicle Filler?

Follicle Filler is a two-step rebuilding and restoring professional treatment for chemically damaged, brittle, and weak hair that lacks luster.

Follicle Filler combines the benefits of Collagen, Biotin, and Hyaluronic Acid with blends of Amino Acids to restore the cellular connectivity in the hair cortex.

Through the filling, coating, and sealing of the molecules of the cells, Follicle Filler gives the cuticle an instant shine and strength, producing healthier hair.

Follicle Filler is designed for all hair types, from curly to gray and over-processed. Whether your clients have thinning fine hair or thick textured strands.

Follicle Filler will:

- ✓ Reverse damaged hair cells
- ✓ Deposit moisture deep into the cortex
- ✓ Hydrate dry & brittle hair
- ✓ Strengthen hair from within
- ✓ Protect hair from future damage
- ✓ Restore the balance of moisture and protein

Follicle Filler is the perfect solution for clients suffering from:

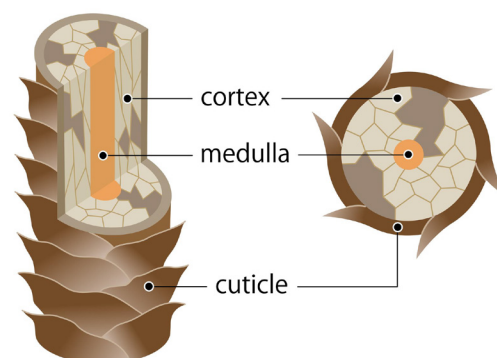
- ✓ Lack of luster
- ✓ Chemical damage
- ✓ Brittle & weak strands
- ✓ Thinning hair
- ✓ Breakage
- ✓ Daily exposure to heat or environmental stressors



How Does Follicle Filler Work?

Follicle Filler combines the benefits of FIVE powerful ingredients to rebuild hair cells at the molecular level. Step one, the Rebuilding & Restoring Formula, is activated by heat under a hooded dryer. The heat allows the treatment to penetrate through the hair cuticle to the cortex to rebuild the hair strand.

Step two, the Collagen Cool Therapy, infuses the hair cuticle and acts as a sealant when placed under the dryer on cool. Combined with the Rebuilding and Restoring Treatment, the Collagen Cool Therapy acts as a powerful diffusion into the hair cortex, resulting in a smooth, glossy finish lasting up to 30 days.



Follicle Filler is powered by: Hyaluronic Acid, Biotin, Collagen, Lactic Acid, and Beta-Glucan.

Hyaluronic Acid: The moisture-binding property of hyaluronic acid is beneficial to all hair types and textures by helping retain the proper balance of lipids, humectants, and proteins required for healthy hair. It hydrates the hair and scalp, reduces frizz, and fills in the cracks of the porous hair shaft.

Biotin: Follicle Filler uses B7 to strengthen the hair and stimulate hair growth.

Lactic Acid: Amino acids that improve scalp by dissolving dead skin cells and product build up, to create the perfect balance for new hair growth, while providing bounce, softness, and fullness to every strand of hair.

Collagen: A key component of the extracellular matrix. The amino acids found in collagen work to rebuild fractured cell molecules in the hair providing connective cell restoration, anchoring cells to each other. It penetrates the cuticle, depositing key nutrients into the cortex to restore youthful hair. As an antioxidant, collagen also protects the hair from future damage caused by environmental stressors.

Beta-Glucan: Acts as a sealant to lock in hydration and prevent moisture loss, resulting in smoother hair, vivid shine, and vibrant color.

The Follicle Filler Difference

Intense Deep Treatment

Follicle Filler is an intense 30-minute deep treatment performed by licensed cosmetologists. It's the combination of two formulas designed to reconstruct the hair and create a foundation for healthy hair. Follicle Filler resets the hair and returns it back to a youthful state of vibrancy, bounce, and strength.

Moisturizing

Follicle Filler not only reconstructs the hair but it deposits moisture, a feature lacking in many of the hair rebuilders on the market. Once a healthy foundation is provided, the addition of the Collagen Cool Therapy deposits even more moisture and delivers a shine produced by the reflection of the new healthier strand.

Ensures Stronger Strands

Follicle Filler is not just powered by one active ingredient, but by FIVE powerful components that work together to not only rebuild the hair strands but to protect them from damage. With stronger strands clients experience better color, styles, and daily manageability.

Promotes Hair Growth

Follicle Filler allows your clients to actually see and enjoy their hair growth. The use of biotin and lactic acid help to stimulate hair growth, while, the hyaluronic acid, collagen, and beta-glucan cater to the actual hair strands to sustain and continue the promotion of hair growth.

Lasts up to 30 days

The application process of Follicle Filler allows for a deeper penetration for a longer-lasting effect.

Formulated for All Hair Types

Gray Hair

Gray hair lacks natural oil because the cuticle is tightly sealed. Its low porosity makes it harder to retain moisture, which can cause breakage. Performing Follicle Filler on gray hair helps to rebuild strength and restore the hair's moisture.

Curly Hair

Low Porosity: Low porosity curls can never retain water or moisture. Due to the tightness of the curl, conditioners, serums, and oils sit on the top of the hair making the natural hair dry. Follicle Filler breaks through this resistance and deposits much needed moisture into the hair strands producing a natural shine and health.

High Porosity: The cuticles of high porosity curls remain open, so although it is easy for the hair to receive moisture, it is also easy for it to lose it. High porosity curls may lack a natural bounce and clients can experience excess shedding and breakage. Follicle Filler will seal the cuticle, lock in moisture, and promote strength to enhance the natural bounce of the curl.

Over-processed/damaged

Damage created by heat or chemicals cause a deficiency in the reproduction of natural protein and moisture in the hair. Ultimately the deficiency breaks or weakens the cells within the hair structure, resulting in excessive daily shedding, breakage, and damage. The outer layer (cuticle) is "blown out" and unable to retain moisture within the hair and cannot naturally repair itself. Follicle Filler is the moisture and protein combination your client needs to rebuild and protect damaged cell molecules.

Formulated for All Hair Types

Thin/Fine

Naturally, thin hair produces more oil in the scalp area due to the lack of density in the hair. The wash days are more frequent because of the oily scalp, leaving the shaft and ends feeling dry and brittle, which can result in breakage. Follicle Filler will hydrate and strengthen the dry areas of the hair to reduce shedding and breakage.

Coarse hair

Thick Density/Full

Is the single strand of hair a full or thick follicle in itself? This hair type produces a high density and is defined as having a lot of hair. This hair usually doesn't get damaged easily but can be difficult to manage or style as it takes more time and product. Follicle Filler will provide manageability and reduce frizz.

Textured Full Density

Some might identify 4a, b, and c hair as coarse due to the texture. However, a single strand is usually medium-fine, but the area's density can be great. The texture and density can result in unmanageability. This hair type is usually dehydrated, dry, and lacks shine and a defined structure, causing excessive breakage and shedding. Follicle Filler hydrates, reduces frizz, increases hair manageability, adds shine, and defines texture.

Follicle Filler Application Process

Prep Hair

- ☑ Shampoo hair 2-3 times with the Lasio Clarifying Shampoo. If doing a color service then use the HYPERSILK Replenishing Shampoo.
- ☑ Towel dry hair thoroughly.
- ☑ Section hair into four quadrants.

Step 1: Follicle Filler Treatment

- ☑ Begin applying Follicle Filler at the nape area, saturating hair from roots to ends.
- ☑ Comb through section by section with a two-hand motion blending product into the hair.
- ☑ For curly hair, put hair into two-strand twists to help define curl structure.
- ☑ Cover with cap.

Step 2: Incubation

- ☑ Place client under a hooded dryer on high heat for 15-20 minutes. For fine hair: 15 minutes. For thick or coarse hair: 20 minutes. If performing a high-lift color service then set the dryer on a low heat.
- ☑ When time is completed, remove client from the dryer, and remove the plastic cap.

Step 3: Collagen Cool Therapy

- ☑ Apply Collagen Cool Therapy on top of Follicle Filler as hair is cooling down. Using a wide tooth comb or massage product into hair section by section infusing collagen rinse into hair.
- ☑ For curly hair in two- strand twists, leave the twists in and add the collagen spray right on top of the twists.
- ☑ Place client under the hooded dryer on COOL setting for 2 minutes. No cap is needed.
- ☑ Using just cool water, rinse out excess product until it feels clean. You may rinse the hair with twists still in tact. No conditioner needed.
- ☑ You are ready for style

Supplies Needed:

1. Plastic Cap
2. Tail comb
3. Clips
4. Head dryer
5. Brush and Bowl

Follicle Filler & Keratin Treatments

Follicle Filler can be used with any Lasio Keratin treatment.

Follicle Filler Before a Keratin Treatment

In instances where clients have extremely damaged or fragile hair that cannot and should not be touched with a flat iron, Follicle Filler is a safe solution to help rebuild, repair, and strengthen the hair strand before the providing the keratin service. The Lasio Keratin Treatment can be performed a week after the Follicle Filler service.



Follicle Filler After a Keratin Treatment

For clients requiring additional moisture after a keratin service due to severe damage, consistently styling with heat, or over-washing the hair, Follicle Filler redeposits moisture, shine, and smoothness for longevity of the keratin service.

Additionally, if a client can not receive a keratin treatment due to medical reasons (pregnant, breast feeding, medical treatments, allergic, etc) or any other reasons, Follicle Filler is a great solution.

Follicle Filler & Color Services

Follicle Filler can be used after color services as an intense conditioning treatment. Follicle Filler will seal in the color and shine and help strengthen the hair by 90% compared to hair that is not treated.

When performing a color service and Follicle Filler the same day, start with the color service. During the incubation process the setting should be on low heat.

Follicle Filler will bring out the true undertones of the color resulting in a more vibrant appearance. It will not oxidize or strip the color. Follicle Filler is also safe on vivid and metallic colors.

Generally, Follicle Filler should be the last process, however, if needed, toners and deposit-only colors are safe to use after the service.



Maintaining Follicle Filler

The Lasio HYPERSILK after-care has been tested and proven to work best for optimum results and longevity of Follicle Filler treatment in the hair. HYPERSILK's luxurious formula perfectly compliments and highlights the best part of the hair by depositing amino acids. It helps to prolong the shine, strength and manageability of the hair. The amino acids in the shampoo and conditioner reactivate the amino acids in the Follicle Filler treatment, adding more vibrancy and movement to the hair.

To protect the longevity of Follicle Filler, it is recommended that clients do not wash their hair more than twice per week.

Exposure to salt and chlorine can also decrease the longevity of Follicle Filler results.

For maintaining the general health of the hair clients should also refrain from consistent use of heat. Clients shouldn't blow dry their hair more than once per week and should refrain from using flat irons.



Follicle Filler FAQ's

Any chances Follicle Filler can damage the hair? No. There are no harsh ingredients or chemicals to cause damage or break hair bonds. Follicle Filler reverses damage.

Is Follicle Filler like a Keratin treatment? Follicle Filler is completely different than a keratin treatment in its chemical makeup, results, and application process.

Will curly hair clients lose their curls? Follicle Filler is curly hair friendly. It will help to enhance and define curls.

Can I do color and Follicle Filler same day? Yes, it's completely safe. When you have someone with fragile, over-bleached hair, remember to place the hooded dryer on a low/warm setting.

Is it possible to damage hair by doing Follicle Filler too much? It is safe to do Follicle Filler more than once a month if your client's lifestyle requires a high-maintenance hair regimen. Regular maintenance is once a month.

How long does Follicle Filler last in the hair? When paired with the recommended Lasio Hypersilk shampoo and conditioner, Follicle Filler will last up to thirty days.

How long does the Follicle Filler process take to do? Thirty minutes or less.

How is Follicle Filler different from other "bond builder" treatments?

Follicle Filler is an exclusive professional line only. Customers cannot purchase the products themselves online or in a store. Follicle Filler also lasts longer than wash-to-wash products.

How is Follicle Filler different than "express keratins"? Follicle Filler is not a keratin treatment at all. It will not reduce or eliminate curls. In addition, Follicle Filler is not sealed with a flat iron and it's completed in thirty minutes. Follicle Filler defines curls and plumps follicles for more volume and bounce.

Is there a hair type or customer Follicle Filler is not good for? Follicle Filler is great for all hair types and structures, naturally or chemically.

Can Follicle Filler be used on kids? Yes, Follicle Filler can be used on kids.

Can Follicle Filler be used on pregnant clients? Yes, Follicle Filler can be used on pregnant clients.



STAY CONNECTED



Have questions?

Email: education@lasioinc.com

Also be sure to follow and tag us

@LasioHair

so we can showcase your

Follicle Filler transformations!

LASIOINC.COM

LASIO[®]
PROFESSIONAL HAIR CARE